

# Twickenham & Richmond TRIBUNE

## Contents

- TickerTape
- Local Postcard Page:  
Twickenham, Alabama, USA
- Moorhead Pavilion update
- Island Isolated
- The Spring Budget
- Richmond May Fair
- The rise in bike theft
- Thames Water's abstraction facility
- Twickenham Museum To Close For  
Renovations
- Health and Wellbeing Board
- Ham, Petersham & Richmond  
Riverside News
- Twickers Foodie
- Three Legs and No Tail! Part 2
- Save Our Restaurant
- Mother's day
- Could real love ever come from  
something artificial?
- Ten things you might not know about  
cherry trees
- Sport

## Contributors

- Alan Winter
- Ron Mushiso, Conservative GLA  
Candidate for South West London
- Doug Goodman
- Jonathan Hulley, Conservative  
Parliamentary Candidate, Twickenham
- The Green Party
- Twickenham Museum
- James Knight
- Cllr Andrée Frieze
- Alison Jee
- Michael Jay
- Petersham Nurseries Restaurant
- Mark Aspen
- Deep Patel
- Richmond Shakespeare Society
- Otakar Kraus Music Trust
- St Mary's University
- Richmond College
- The Royal Parks
- RFU
- Brentford FC
- LBRuT

## Editors

Berkley Driscoll  
Teresa Read



15<sup>th</sup> March 2024

T&RT

# TickerTape - News in Brief

## Time is running out for Mortlake

From Mortlake Brewery Community Group

This is the last opportunity to save Mortlake from overdevelopment.

The latest plans for the Brewery and a new secondary school have been passed by Richmond Planning Committee. The GLA has objected to the two applications, now the developers have asked for a Planning Inquiry. The Inquiry will start at the end of May and last for eight days.

Mortlake Brewery Community Group needs to raise funds for legal and planning advice to prepare for the Planning Inquiry, and for our case to be represented there. For a full explanation of what's at stake, [click here](#).

Please consider contributing to our Fighting Fund for this vitally important Planning Inquiry. We are grateful for all donations, whatever the amount. Your donation will help secure a better Mortlake.

Thank you for helping us save Mortlake.

<https://www.mbcg.org.uk/>

More info [HERE](#)

Donate [HERE](#)



**The Tree Agency**

darryl parkin

The Treehouse  
25 King Edwards Grove  
Teddington, Middlesex TW11 9LY  
Telephone 020 8274 0107  
Mobile 07960 123580  
Fax 020 8274 0119  
info@thetreeagency.co.uk  
www.thetreeagency.co.uk



*The Tree Agency*

# Local Picture Postcard Column - Part 240

By Alan Winter

## Twickenham, Alabama, USA

These two postcards from the USA came my way recently. I had never heard of Twickenham in Alabama so thought I would share my few findings with you this week. Huntsville is the most populated city in the southern state of Alabama and is the county seat of Madison County.

Twickenham Historic District was the first historic district designated in Huntsville, Alabama, USA. It was added to the National Register of Historic Places on January 4, 1973, with a boundary increase on May 26, 2015. The name derives from an early name for the town of Huntsville, named after Twickenham, England, by LeRoy Pope Walker who was a brigadier general in the American Civil War and was made 1st Confederate States Secretary of War.

It features homes in the Federal and Greek Revival architectural styles introduced to the city by Virginia-born architect George Gilliam Steele about 1818, and contains the most dense concentration of antebellum homes in Alabama.



The first postcard is of the Twickenham Hotel and is supported by

a photo of a hotel book of matches from the 1940's. This hotel was known as the best in Huntsville for over 50 years and it's building and opening were times of great celebration in the city.

On an April afternoon in 1914, the City of Huntsville was at a standstill. Crowds advanced to the city centre and patiently waited for the festivities to begin. It was the official groundbreaking of the Hotel Twickenham and Huntsville had never seen such an elaborate spectacle.

At 2 pm, the nearby factories blew their whistles to welcome the hotel into existence. Brass bands boomed, crowds cheered, and a golden shovel—held by a Miss Elizabeth Cooper—officially broke ground.

The Twickenham Hotel claimed its title as the “Pride of Huntsville” during its heyday. An establishment steeped in elegance, Twickenham was the getaway of choice for dignitaries and traveling businessmen, and known as the venue where locals wined, dined, and enjoyed elaborate parties from 1915.



Its life on the corner of Clinton Avenue and Washington Street is one of glory, with stories that often involve the hotel's famed manager Quincy B. Love. Mr. Love spoke to guests and assured them that the hotel would run on a very high plane business plan. Music played softly in the background as the Florence Orchestra serenaded the room, and toasts were made to a bright future.

For many years, the Twickenham Hotel was famous for its incredible service—no doubt thanks to Mr. Love—and delectable cuisine. Guests described the rooms as large, airy, light, and cheerful. They also appreciated the fair pricing when dining in at the establishment.



The Twickenham, like many of the other early Huntsville hotels, offered auxiliary businesses like coffee shops, gift shops, pool halls, and a barbershop as well.

Although the hotel closed to guests in 1971, its popularity was briefly revived in 1974 when it served as a downtown senior centre. The Fellowship Centre, as it was called, transformed the old building into a place for seniors to enjoy dancing, laughing, and social gatherings.

Today, a municipal parking garage sits where the Twickenham Hotel once stood. But it is fondly remembered as “The Best American plan hotel in Alabama.”

We also have a postcard of Twickenham Station in Huntsville which turned itself into a top-class restaurant where you could sit in the famed “red dining car” or while fine dining in old railroad cars near Huntsville’s Von Braun Centre in the 1970s and ’80s.



The image of the reverse of the postcard states how the station saw itself during its heyday.

I’m aware of several other “Twickenham’s” out there in the world. If any of you can show me post cards of other Twickenhams I will use them as a basis for another column.

If you have any old postcards sitting in a box or album at home that you are considering parting with, I’d be very interested in arranging to see them. Please contact me on 07875 578398 or by email at [alanwinter192@hotmail.com](mailto:alanwinter192@hotmail.com) I am happy to pay cash for any postcards or photographs that I find of interest. So don’t throw old postcards etc. in the skip or recycling bins. Show them to me first!

# CrusaderTravel

020 8744 0474

[crusadertravel.com](http://crusadertravel.com)

Escapology Experts

[info@crusadertravel.com](mailto:info@crusadertravel.com)



Your friendly local Travel Agency  
established in Twickenham since 1966

With over 50 years experience we pride ourselves on being able to offer an unrivalled service with attention to detail. Come and have a chat with us in our cosy office off the Church Street Square, we are open 6 days a week from 11am until 6pm (Closed Sunday)



# Come to the Moormead Pavilion update event

From the Moormead Community and Sports Pavilion

On Wednesday 27 March, The Moormead Community and Sport Pavilion (MCSP) project will host an event to provide further information on its rebuild.

The event will take place at the Turk's Head pub from 7pm. An update will be provided about the project and residents will be told how they can get involved with some local fundraisers.

Following a £150,000 council contribution towards the community project, the lease is now being negotiated and essential site surveys are being completed.

Fundraising is now the priority. As soon as the MCSP team has raised the necessary funds through grant applications and community donations, they'll secure building contractors to start the project.

The grant applications have begun. If you'd like to volunteer your time to help with this crucial part of the project, email [hello@mcsp.org.uk](mailto:hello@mcsp.org.uk).

MCSP is also recruiting a [Managing Director](#). Please send your CV to [gariesh@mcsp.org.uk](mailto:gariesh@mcsp.org.uk) if you'd like to apply.

Event details:

- **Date:** Wednesday 27 March
- **Time:** 7pm
- **Location:** Winchester Room, Turk's Head, 28 Winchester Road, Twickenham, TW1 1LF
- **Price:** Free





# Twickenham Conservatives

Jonathan Hulley, the Conservative prospective Parliamentary candidate for Twickenham constituency, will be holding a Shadow MP Surgery on **Saturday March 16th from 10am to 12noon.**

The venue will be the Conservative constituency Office, **90 York Road, Teddington, TW11 8SN.**

Jonathan will be in attendance to take up any issue of local concern and give his professional opinion and offer his expertise and support on any matter that you wish to bring to his attention.

There is no need to make an appointment.

## Shadow MP Surgery

Promoted by  
Jonathan Hulley  
of 90 York Road  
Teddington  
TW11 8SN.

**All are  
Welcome  
To attend.**



# ISLAND ISOLATED

Report and pictures by Doug Goodman

Exceptionally high tides on the Thames in the week caused problems for residents of Eel Pie Island as well as for motorists who parked their cars in an unwise spot. While providing a photo opportunity for locals the high water unfortunately flooded cars and necessitated a long wait or wet feet for the islanders. Once there used to be a light alongside the church which flashed a warning of a likely flood. Perhaps the council should reinstate the light to tell motorists not to park near the river.





# Richmond upon Thames residents urged to recycle small electricals through new kerbside collection service and community recycling banks

Richmond Council unveils its plans for a two-pronged expansion of its [small electricals recycling service](#), which will offer new weekly kerbside collections for around 68,000 households and see the installation of 20 new recycling banks around the borough.

From today, 20 striking new pink small electrical recycling banks will be installed in [convenient locations](#) across the borough – which will include select supermarkets, primary schools, railway stations and public car parks – in addition to the 10 banks that already exist in most local libraries.

The second phase of the project, launching on 18 March, offers residents that live in [properties that already receive kerbside recycling](#) easy access to small electrical recycling from home. Households can simply add used, broken and unwanted small electrical items to their weekly mixed container (black box) collections, in a standard size, open carrier bag.



This is one of the largest of over 40 UK projects funded by Material Focus, the not for profit leading the Recycle Your Electricals campaign, who have provided nearly £30,000 of funding to support the electricals recycling expansion in Richmond upon Thames, joining other projects around the country in making it easier for 10 million UK residents to recycle their electricals.

The installation of recycling banks in convenient, busy locations and the introduction of household kerbside electrical recycling collections by the Council aims to make it extremely simple for local residents to responsibly dispose of unwanted items, rather than tossing them in the bin.



Anything with a plug, battery or cable up to the size of a coffee maker or two-slice toaster can be recycled and turned into something new through this scheme.

Residents will be made aware of how and where they can recycle their electricals through information on leaflets and on eye-catching posters featuring HypnoCat. Keep an eye out for HypnoCat, the Recycle Your Electricals mesmerising pink, fluffy mascot, who is on a mission to hypnotise local residents into recycling their electricals.

The aim of the nationwide Electricals Recycling Fund is to significantly reduce e-waste and its environmental impact by making it easier for consumers to recycle their electricals. The projects that have been funded by Material Focus include a variety of recycling methods, from kerbside collections to more drop-off points in schools, community centres, and bring banks. Overall, there will be over 400 new collection points plus kerbside collections for 5.5 million UK residents.

Recycle Your Electricals research has shown that 80% of consumers believe recycling is a good thing, and many of us already recycle things like paper and plastic. Research has also shown that most of us have unwanted electricals we want to get rid of.

On average there are at least 30 electricals hidden away in drawers in UK homes, a total of 880 million items across the UK - with a simple repair many could be donated or sold to people who could put them to good use. And yet 39% of people bin electricals, rather than recycle or reuse them leading to over 100,000 tonnes of electricals thrown away every year. The aim of these projects is to overcome these issues by making it easier to repair, donate or recycle electricals.



Cllr Julia Neden-Watts, Chair of Richmond Council’s Environment, Sustainability, Culture and Sports Committee, said:

*“We’re very pleased to be launching two new elements to boost our recycling provision for small electrical items, thanks to funding support from Material Focus. This will help us to ensure that residents across the borough have easier, more convenient ways to recycle their e-waste.*

*Reducing waste locally and supporting residents with clear, simple ways to access recycling services in our communities will be a key part of our progress towards our ambitious target of becoming a Net Zero borough by 2043.”*

*“We are pleased to support Richmond Council’s new kerbside collection service for small electricals, as well as expanded recycling banks across the borough, both of which address the pressing issue of e-waste.” said Scott Butler, Executive Director of Material Focus. “By investing in improved collection and drop-off services and exploring new recycling methods, we are taking a significant step towards creating a more sustainable future by making it easier for 10 million more people to recycle their electricals.”*

To find your nearest recycling point and more information about kerbside electricals recycling in Richmond upon Thames, [visit their website](#).

You can also [find local options](#) for donating or exchanging unwanted small electrical items in good condition.

# The Spring Budget will make a real difference to households and businesses across Twickenham constituency

By Jonathan Hulley, Conservative Parliamentary Candidate, Twickenham

**A 2% cut in National Insurance on** the back of a 2% cut in National Insurance last November, will see average earners keep more than £900 of their hard earned money from April 2024.

The Budget also saw steps taken to **reduce costs for businesses to boost growth and investment**. For example, the VAT registration threshold will be increased from £85 000 to £90 000 from April 2024, helping thousands of small businesses, including in Twickenham constituency.



There are also very encouraging **new measures to support families through child benefit reform and delivery of increased childcare**. The threshold will for a high income tax charge on the benefit will be raised from £50 000 to £60 000. The top of a taper to withdraw the benefit will be raised to £80 000 from £60 000 at the moment. And rates paid to nurseries to fund free childcare hours for parents of children aged more than 9 months will continue for the next 2 years. And for property owners, property capital gains tax is reduced from 28% to 24%.

I welcome the decision of the **Covid-era Household Support Fund for a further six months** to support those in Twickenham most in need.

**The freezing of alcohol duty** will provide a boost to the pub and hospitality sector, and I welcome the **further freezing of fuel duty rates** which sends a clear message that this Government is on the side of the motorist.

I also welcome **new investment in NHS modernisation** aimed at reducing administrative burdens on staff, freeing up thousands of hours for direct patient care, while improving efficiency, value and speed of service delivery.

This is a Budget that delivers for all residents of Twickenham constituency and I welcome it.

# Record number of stall applications for the 2024 Richmond May Fair

Following a three-year absence, 2023 saw the successful return of the Richmond May Fair with thousands attending on the day. This year, with more than 200 stallholders already signed up, the 2024 Fair promises to be bigger and better than ever.

The Fair takes place on Saturday 11th May, 10am to 5pm, on Richmond Green and will be opened by the Mayor of Richmond upon Thames. Attracting visitors from across the borough of Richmond and beyond, it is a much-loved fixture in the borough calendar and the town's biggest community event.



Old favourites like the vintage funfair and dog show return, along with a host of stalls, the craft marquee and a variety of food and drink. Local bands, schools and various performance groups will provide free entertainment throughout the day on the Riverside Radio stage.

With charities, artisans, businesses and schools all represented, the Fair is a showcase for all that Richmond has to offer and plays an important role in helping local charities promote their work and raise much-needed funds. For the first

time, stallholders are able to apply, book and pay for their stall online via the new Fair website, [www.richmondmayfair.co.uk](http://www.richmondmayfair.co.uk). Applications are significantly up on last year, a testament to the success and popularity of the Fair. The closing date for applications is the end of March.

The borough of Richmond was recently named Britain's "happiest place to live" by property website Rightmove, highlighting the sense of community Richmond residents share. The Richmond May Fair embodies this community spirit.

Pamela Fleming, Chair of the Richmond May Fair Committee, commented: *"Following on from the great success of last year's Fair, the Committee wants to make 2024 even better. Our new website has allowed us to build visibility of the Fair and has automated the application process for stallholders. Volunteers can also register their interest on the website and local dog owners can enter the ever-popular dog show, judged again this year by Ian Stroud of Pet People. We also have a new, eye-catching logo that captures all the fun of the Fair; you'll be seeing this advertised on posters very soon."*

*The Fair is part of Richmond's rich heritage and fosters a real sense of community. Our aim is to make sure there is something for everyone and to suit every pocket and taste. And while we want our charity and small business stallholders to have a hugely successful day, we also want people to know that they can come along to the Fair to enjoy the free entertainment and soak up the community atmosphere."*

The Fair's main sponsor is Be Richmond. A spokesperson for Be Richmond said:

*"Be Richmond is delighted to be a main sponsor of this fantastic annual community event. As Richmond's Business Improvement District (BID), we are continuously striving to drive footfall to our vibrant high street and its wealth of local businesses and events like the May Fair strongly contribute to this. The May Fair also brings together Richmond's community and raises much needed funds for charity; we are very proud to be involved."*



# The rise in bike theft – A microcosm of London’s moral decay

By Ron Mushiso, Conservative GLA Candidate for South West London

In recent weeks, two friends of mine have had bikes stolen from their premises. On both occasions, the police were informed and so far, it has yielded nothing except a crime reference number. One friend in Twickenham has made some headway with their insurance company and the other in Chiswick has resigned to fate. These stories are all too familiar. Londoners are facing similar violations daily.



Police efforts, including community workshops for bike marking, have been commendable. But it seems even these measures are insufficient in deterring bike theft. My personal journey with bike theft dates to my childhood. Arriving in the UK in 1993, the first real gift I was given by dad was a 2<sup>nd</sup> hand children’s mountain bike. It meant everything to me.

Bikes are a prized possession in my native Uganda, where such luxuries were rare. Despite my initial struggles, learning to ride the thing, it became a cherished asset of mine. Only to be stolen the following summer in 1994. I was heartbroken and I got myself in a lot of trouble for not being vigilant.



*Photo of the thief in action*

Bike theft is not novel; it has plagued London for decades I imagine. However, I am sure you would agree that the past 30 years have seen a shift not in the act of theft but in our collective moral compass. It seems the days of respecting each other’s property, and respecting figures of authority like police have diminished. My upbringing, across various foster homes and cultures, was anchored in faith and community values—principles seemingly diluted today.

With theft in London up by 31%, we are witnessing a declining trust in authority and an ascendancy of selfishness. The societal shift towards materialism

and individual accolades undercuts the essence of community and compassion for the other. The ethos of individualism is meant to harmonise our personal freedom with good neighbourliness. That now seems to be lacking.

I believe that the crux of this discord lies with us abandoning the basic principles of community and trust. We no longer seem trust politicians and we seem to be adding the police that list if social media is to be believed. But trust in our systems is essentials for true freedom. We have work to do, I am I trying to do my bit.

A revival of morality centred on doing what is right for the collective good. As a community we should always tilt towards building harmonious society, bound by common goals and mutual respect, irrespective of our backgrounds or possessions.

Our foundation should rest on traditional family values (even as a looked after child), fairness, and the rule of law. Deviating from these principles threatens the fabric of our society, leading us onto precarious ground towards moral bankruptcy.

Addressing the symptom—bike theft—without confronting the underlying moral decay is futile. Yes, we need to catch and penalise wrongdoers. But we also need to build a society that values empathy, respect, and personal responsibility.

Let us not excuse theft with narratives of society has failed these criminals. Instead, let us uphold the high principles of morality. In doing so, we can return to a version of London where people respect law and each other’s possessions.

# Green Party Deputy Leader and London Assembly Member Zack Polanski heard from Save Our Lands and River about Thames Water's destructive plans

On Saturday 9 March, Zack Polanski, Green Party Deputy Leader visited the proposed site of Thames Water's abstraction facility on the riverside near Teddington Lock to see for himself the unique and beautiful area that would be impacted. At the Burnell Avenue open area he met with local residents from North Kingston and Ham, along with members of [Save Our Lands And River](#) (SOLAR), local councillors and London Assembly Green Party candidate Chas Warlow.

Thames Water's [Teddington Direct River Abstraction](#) proposal involves removing 75 million litres of water a day from the River Thames via a newly built abstraction site near the Burnell Open Space in Kingston, to connect to the existing Thames Lee Tunnel to take the water to the Lee valley for use as drinking water.

This water will be replaced with treated effluent from the Mogden sewage treatment works in Hounslow,

brought over via a new 4.5 km long tunnel dug under the streets, parks and open spaces of Isleworth, Twickenham, Teddington, Ham and Kingston – plus the Thames between Orleans Park and Ham House. It will require eight shafts to access the pipeline including three in Ham alone. One would be next to a playground and two in [Ham Lands](#), a Nature Reserve and Site of Metropolitan Importance for Nature Conservation.

The construction of these shafts, tunnel and extraction plant will cause untold damage to the special biodiversity, rare butterflies and wildflowers, that are found there, such as meadow saxifrage, hemlock water-dropwort, yellow vetchling, silver cinquefoil, pepperwort, bee orchid and pyramidal orchid. Other environmental concerns include increased water temperatures and a change in the salinity of the river, which will affect fish and other marine life.

Thames Water say they need to replace the water with treated sewage as they're required to maintain a specific level of water going over the weir at Teddington. However, the water will only be extracted in times of prolonged drought, that is, only every two-to-three years between July and November until 2075.

Residents told Assembly Member Zack Polanski about their concerns about potential damage to the ecology of Ham Lands and questioned the need for the abstraction plans when Thames Water is losing 635 million litres of water a day through leaks.

Zack Polanski said: *"It was really helpful to listen to people from the community who will be affected by these plans. It's really clear that they feel like they're being notified rather than consulted. It's vitally important that Thames Water actually engage with people and seek to look at alternatives that aren't so destructive to habitat."*



# Twickenham Museum To Close For Renovations

From Twickenham Museum

Twickenham Museum, the local history museum for the old borough of Twickenham, is closing for nine weeks beginning Monday 18<sup>th</sup> March. Located on the line of the ancient foreshore alongside St Mary's Church, the 390-year-old Grade II listed building is to undergo much-needed repair, restoration and redisplay.

The long-overdue revitalisation will upgrade the eclectic assortment of display cases and cabinets acquired since the museum opened in 2001. Highly experienced professionals have been drafted in to overcome the quirky nature of the floors in the fitting of industry-standard mannequin and other display cases to best preserve items in our case and to share many more. As well as redecoration and full redisplay of the first floor exhibition area, the roof requires close inspection and some internal walls replastered.

Fresh evidence reveals from structural and other investigations that parts of the house date back to the 1630s as part of a fast developing riverside community. Since then, the house has been home to all manner of trades and professions, the last occupant being the journalist and local heritage activist Jack Ellis who fought to save what remains of the Church Street neighbourhood from demolition in the 60s.



Jack left the building to the Twickenham Museum Trust to become a museum for the old borough of Twickenham, which has been its use since 2001. Its purpose is to collect, record and preserve the local history of Twickenham, Whitton, Teddington and The Hamptons that once formed the London borough of Twickenham before Richmond upon Thames was created in 1965.

A volunteer-led, self-supporting undertaking, funding for these essential renovation and improvement works comes by way of a generous bequest from the late Freda Hammerton whose family name enjoys a special place in the history of Thames watermen.

We are looking to re-open the museum on Saturday 11<sup>th</sup> May (11am to 3pm) and thereafter on Fridays at the same time and Sundays from 2.00pm to 4.00pm. Although, such has been the response to a call for volunteers last year that we may be revising our opening times to include an extra day. Meanwhile, watch this space!

<https://www.twickenham-museum.org.uk/>



# Health and Wellbeing Board

By James Knight

## New Pharmacy for North Hampton / Pavement trip hazards

The first substantive part of the meeting was the public involvement section. There was one speaker who spoke against **electroconvulsive therapy** and how the mental health system treats people in general. She said that treatment was linked to public attitudes and gave the example of how homosexuality used to be considered a mental illness, with some people subjected to lobotomies as a consequence. She said far too many people were being sectioned due to doctors not understanding the Mental Health Act and how it interacts with the Mental Capacity Act. Councillors asked several questions, but these were inaudible.

Then Luke Evans gave a verbal update on **pharmacies**. He said they received an application in late January for a pharmacy to be opened in the Tangle Park area of Hampton. The board members were surveyed to determine their support of the proposal; all nine members were in favour. The director of Public Health, Shannon Katiyo, said that the pharmacy closure in Hampton North was a new situation for them, and they were in uncharted waters. The pharmacy subgroup of the Health and Wellbeing board had met several times, and they hadn't realised how complex pharmacy regulation was before. He said the learning from this was they needed an ongoing mechanism to engage with pharmacists. He suggested establishing a pharmacy working group to review broader pharmacy issues and report to the board.

Cllr Piers Allen (West Twickenham), chair of the committee, said the final decision on the new pharmacy would be made by March 28, providing that no interested parties made an appeal. Cllr Clare Vollum (Kew) said the council needs to take a proactive approach to pharmacies in general and identify people struggling with access. Cllr Nancy Baldwin (North Richmond) asked if there was any way to bias the commissioning of services to independent pharmacists. Cllr Allen said the council would be in a better position to respond to a future pharmacy closure due to the work they had done.

Brian Roberts, Head of Health and Care, Richmond and Wandsworth Councils, gave the Better Care Fund (BCF) quarter three update. He said this fund is the government's main vehicle for **integrating health and social care**. He said the metrics showed the council doing pretty well compared to previous years; they only struggle with the discharge to their usual residence metric. The council's contribution to the cost of the schemes managed by the BCF is £8.5 million for the council, against a total expenditure of £18.2 million.

Cllr Baldwin asked if the board worked with the transport people to ensure the **pavements** are in good nick, as much of this reablement would not be needed if the residents didn't trip over the pavements in the first place. Brian Roberts said this was something they had already raised with them. Cllr Baldwin said that Cllr Ehmann needed to be chased up about this.



# Have your say on a new community food growing area for Hampton

From Richmond Council

Our Parks team are proposing to establish a community food growing area at Dean Road Open Space in Hampton and want to hear from local residents.

This new community food growing space would be operated by local volunteers and community groups who have expressed interest in supporting the initiative. It would also provide a learning and meeting place where people of all ages from our local community can learn about:

- Food origins – where does my food come from?
- Growing your own skills
- Biodiversity
- Cookery
- Recycling and upcycling

This initiative is intended to support the local community by bringing together community groups to work together to grow fruit, vegetables and flowers. These would then be shared and consumed by the groups involved. Once the proposed project becomes established, the groups would then be able to engage with local schools and help educate them on the benefits of food growing.

The map below shows the exact location of the proposed community food growing area. The yellow box indicates the area to be used:

You can learn more about the proposals and give us your feedback before Tuesday 2 April by filling out our online survey. All feedback received will be fully considered before any decisions are made on whether to progress the project.

[Have your say](#)

If you need to request a paper questionnaire or any other format, contact our Parks team by emailing [parks@richmond.gov.uk](mailto:parks@richmond.gov.uk) or calling 020 8891 1411.



# Council leaders condemn removal of children's cancer care from St George's

From Richmond Council

Council leaders from across south west London and Surrey have condemned the announcement by NHS managers that children's cancer services are to be removed from Tooting's St George's Hospital.

The NHS have confirmed that paediatric cancer treatments are to end at St George's and instead be provided at the Evelina Hospital in central London.

The cross-party group of council leaders from all three main parties – Liberal Democrat, Labour and Conservative - say the decision is short-sighted, goes against parents' wishes and risks the loss of clinical expertise built up over 25 years at St George's. They also have serious concerns about potential travel difficulties for child cancer patients and their families due to the Evelina's location in central London.

The council leaders have [jointly written to the Health Secretary](#) urging her to reverse the decision.

Cllr Gareth Roberts, Leader of Richmond Council, said: "We are incredibly disappointed at the NHS's decision to move the cancer care unit at St George's to central London despite overwhelming opposition from families.

"We are working with our colleagues across south west London and Surrey to urge the NHS and government to reconsider and keep vital children's cancer care services in south west London."

St George's supports child patients from across south west London, Surrey, Brighton and Hove, East Sussex, Kent and Medway.





YOUR COUNCILLOR  
ANDRÉE FRIEZE

## WHERE TO GET SUPPORT LOCALLY

### The charity Cooking Up is providing FREE cookery lessons at Ham Youth Centre

These 5-week courses are on Wednesdays from 11am to 12.30pm. Each week, volunteers will help you cook a meal for up to four people. They'll provide all ingredients and equipment, and a take-away carton for you to take your food home, plus a recipe card so you can cook it again yourself anytime.

Email [info@cookingup.org](mailto:info@cookingup.org) to find out when the next course starts and to sign up.

Financial worries can be a real burden and debts can mount up all too easily. Crosslight Advice is a financial advice charity offering a FREE service to Richmond residents, including help with rent arrears, advice on energy arrears, money education and budgeting support. Go to [www.crosslightadvice.org](http://www.crosslightadvice.org) or email Andrée and she can refer you.

**Andrée says:** *"I've also heard that this spring, at Ham Youth Centre, the Vineyard is planning to open a food bank, while the Real Junk Food Project hopes to start up its pay-as-you-feel cafe. As soon as I know more, I will share details."*



Residents on a Cooking Up course in Ham Youth Centre

## THAMES WATER BYPASSES LOCAL PLANNING PERMISSION



Andrée joined residents including Cllr Chas Warlow on a rally to protest against Thames Water's plans

Most of you will have heard about the Thames Water plan for discharging treated wastewater at Teddington and removing water from the river. We now know it will be dealt with through a Direct Consent Order (DCO).

Going for a DCO means the final decision on whether to allow the Thames Water Direct River Abstraction (TDRA) project to go ahead will be made by the Secretary of State, NOT the local councils. The next two years will see public consultation - including one on design later in 2024 - and some environmental assessments taking place.

**Andrée says:** *"I am deeply concerned about this project and have been working closely with Save Our Lands and River, the voluntary campaign group opposing the plan. This project is misguided: Thames Water should be fixing its leaks, not using the stretch of the river here as a cesspool."*

#### More info:

- Save Our Lands And River [saveourlandsandriver.org.uk](http://saveourlandsandriver.org.uk)
- Teddington Direct River Abstraction - Thames Water Resources Management Plan [thames-wrmp.co.uk](http://thames-wrmp.co.uk)

# LONDON ELECTION NEWS

## Meet your local London Assembly Candidate



London Assembly candidate Chas Warlow with Cllr Andrée Frieze

On 2 May, in the London elections, you get three votes - one for the Mayor, another for the political party and a third for the South West London constituency, covering Richmond, Kingston and Hounslow.

Our Green Party candidate is Councillor Chas Warlow, who is well known in Ham and Petersham, having lived here since 2007. He is an energetic campaigner and member of many local community groups and grassroots projects. He set up and ran the Low Carbon Neighbourhood scheme, headed the project to get renewable energy on the Thames at Teddington Weir and was a governor at Grey Court School.

Since 2022, he has been a Green Party Councillor for South Richmond, alongside Andrée, your Green Party Councillor for Ham, Petersham & Richmond Riverside.

**Andrée says:** *"I am delighted that Chas is standing as the candidate for South West London on 2 May. I know he will be a strong champion for residents and fight for better, more affordable housing, cleaner air in pollution hotspots and make our area an even better place to live. Give your vote to Chas Warlow in the constituency part of the election."*

## YOU NOW NEED PHOTO ID TO VOTE IN ELECTIONS

Check out the list of acceptable forms of ID at: [richmond.gov.uk/council/elections\\_voting\\_and\\_registration/elections\\_act\\_voter\\_identification](https://richmond.gov.uk/council/elections_voting_and_registration/elections_act_voter_identification)

If you don't have one of these, you can apply on the above website for a free of charge voter authority certificate. Do it now so you're ready for May's election.



## Free MMR vaccine walk-in clinic available Saturday

This Saturday 16 March 2024, Hampton Wick Surgery is offering walk-in Measles, Mumps and Rubella (MMR) vaccine appointments to residents who are registered with a Richmond Upon Thames GP.

The walk-in clinic will take place from 9am to 4pm at Tudor House, 26 Upper Teddington Road, KT1 4DY.

You do not need an appointment to attend the clinic, but please ensure you bring proof of vaccinations or your child's red book. If you are unsure if you or a child are up to date, you can check the red book or GP records.

As measles cases continue to rise in south west London, it is important to make sure that you and your family are protected against becoming seriously unwell with measles by checking you are up to date with your MMR vaccines.

The first vaccine is typically given at age one year, and the second at age three years and four months. However, if you have missed any doses, even into adulthood, it is not too late to catch up.

Find out more about [NHS vaccinations and when to have them](#).

# Local charities join forces to fight furniture poverty

From Richmond Furniture Scheme

The Richmond Furniture Scheme (RFS) is delighted to announce that it is now working with Age UK Richmond to support residents in need with grants for furniture and appliances.

The RFS is a friendly furniture reuse project based in Twickenham. It takes donated furniture and volunteers fix and upcycle it to sell it at affordable prices. It also sells refurbished white goods and microwaves.

It currently has partnerships with us and Wandsworth Council, housing associations and several local charities who award grants for residents in need. Those receiving grants can visit RFS's warehouse or online shop and choose great quality furniture and refurbished appliances.

RFS is delighted to now be able to reach more people who are struggling financially, thanks to its partnership with Age UK Richmond.

“One of our key objectives is to provide people in need with affordable furniture. I am so pleased we are partnering with Age UK Richmond to offer new avenues of support to our community,” said RFS CEO Simon Westgarth.

RFS also offers a 25% discount to people receiving grants and other groups on low incomes

Find out more about how you can access grants and discounts through the [RFS website](#).

Or phone the charity's friendly team for a chat on 020 8755 4665.



## Richmond Furniture Scheme

*“Giving furniture a home”*

# RICHMOND MAY FAIR

est. 1970

Sponsored by

Be Richmond 

SAT 11TH MAY 2024  
**10AM - 5PM**  
RICHMOND GREEN TW9 1LX



**VICTORIAN FUN FAIR**  
**CHARITY & SMALL BUSINESS**  
**STALLS • DOG SHOW**  
**FABULOUS FOOD & DRINK**  
**CRAFT FAIR**  
**ENTERTAINMENT**  
**& MORE...**



*Scan here for more information*

[WWW.RICHMONDMAYFAIR.CO.UK](http://WWW.RICHMONDMAYFAIR.CO.UK)

# The council sketch



At the Health and Wellbeing Board one of the most senior council officers, could be seen munching on his sandwiches and slurping his Pret-A-Manger coffee during the meeting while a member of the public was delivering their speech.

Eating your lunch during a public meeting shows a lack of respect for the public he serves and is a poor role model for the more junior staff he oversees. Let's hope the chief executive Mike Jackson has a discreet word in his ear.

## Night-time road closures planned for King Street, Richmond

King Street in Richmond will be closed overnight on Saturday 16 March and Sunday 17 March 2024 at the junction with George Street, for crane operations.

The closures will take place from 8pm to 4.30am. The road will be fully closed to ensure the safety of those taking part in the works.

Local traffic and buses will be on diversion during this time.

If you have any comments, queries or objections relating to these works and the associated road closure, please contact Sheen Lane Developments on 020 3598 2398 or at [hfoxall@sheenlane.co.uk](mailto:hfoxall@sheenlane.co.uk).

Sign up to our [roadworks mailing list](#) to receive our weekly bulletin of all the scheduled works taking place in the borough, as well as notifications of any emergency works.



## KOMBUCHA: A DROP OR TWO OF THE HEALTHIER STUFF

It's a drink that's rapidly growing in popularity, but what exactly is kombucha?

Basically, it's a fermented tea, thought to have originated in China, and there's lots more info about it on [Wikipedia](https://en.wikipedia.org/wiki/Kombucha). But while one can produce it at home, there are so many excellent commercially prepared kombuchas on the market now, that it hardly seems worth the effort. Kombucha is slightly sour, a little bit tart and can be a little bit sweet. It really depends on two things: who's brewing it, and the flavours they're adding, which can typically be floral, herbal, or fruity notes. I've tasted some excellent kombuchas recently and here are some of my favourites:

**MOMO Kombucha** ([www.momo-kombucha.com](http://www.momo-kombucha.com)), creates **Great Taste Award** winning kombucha in glass bottles. MOMO started with an adventure: Josh and Lisa discovered kombucha back in 2016 while on a trip to the Big Apple. Drinking it made them feel amazing, so on return to London, they started home brewing kombucha in their kitchen in



the old-fashioned way (in a glass jar) and completely fell in love with the process. It's organic and unfiltered, for a fuller depth of flavour and it's highly sustainable. Available in four regular flavours: Ginger-Lemon, the most popular; Turmeric; Elderflower, and Raspberry-Hibiscus, the perfect alcohol alternative. There are also regular limited edition specials such as Tomlinson's Forced Rhubarb. Available at around £4 for a 330ml bottle from Ocado, Amazon and via [www.momo-kombucha.com](http://www.momo-kombucha.com)



Another delicious favourite - and also **Great Taste Award** winning brand - is **Hip Hop**, founded back in 2019 by Emma and Kenny, Kenny had been struggling with stomach issues and after a stint living in America, where Emma learnt about the popularity of kombucha, she showed Kenny how to make it. Within weeks, his problems were alleviated - leading to the creation of this great microbrewery. As well as kombuchas, there is a range of award-winning Living Sodas . The drinks are packed with gut-friendly probiotics, vitamins and antioxidants. There's nothing artificial, no sweeteners and the range of flavours includes wonderful combinations such as Apple Elderflower; Blueberry Ginger; Ginger Yuzu; Blood Orange & Grapefruit; Cherry & Blackberry and Strawberry & Pineapple. Limited edition seasonal lines are also added regularly. They're very good indeed and available at Sainsbury's (£5.25 for four cans), Marks & Spencer and of course online at [drinkhiphop.com](http://drinkhiphop.com) where I'd suggest you find out more information and order a mixed case of 24 cans (£29.99) so that you can find your favourite.





**Fix8** is very well named - as it's so easy to get fixated on this refreshing drink! **Fix8 Kombucha Sodas** are made from 100% natural ingredients. Loaded with vitamin C and live cultures, it's scientifically designed to reach your gut and is available in three flavours: Strawberry Basil; Ginger Turmeric and my favourite - Sicilian Citrus. Luckily, it's pretty widely available too: Waitrose; Ocado; Wholefoods and Planet Organic plus independents and cafes. £5.50 for a pack of four cans.



One of the earliest brands to hit the functional drinks scene in the UK is **Remedy** kombucha. It originated in Australia back in 2012 and has good distribution here including Ocado, Morrisons, Holland & Barrett, Starbucks, M&S, WHSmith, Amazon – and now Sainsbury's. The latest flavour is Orange Squeeze which joins the other eight flavours (Wild Berry; Berry Blast; Tropical Twist; Ginger Lemon; Raspberry Lemonade; Mango Passion; Cherry Plum and Peach). Remedy kombucha contains live cultures and organic acids to support gut health and is also free from

sugar and contains only natural ingredients.

Apparently a Remedy can or multi-serve bottle is sold every 2.5 seconds. From around £5.50 for a pack of four cans.

**Lo Bros** is another great company that uses authentic fermentation to craft brew delicious, healthier all-natural drinks, with vibrant flavours that are naturally low in sugar and alive with living cultures. The company also makes a stand against “the devious drinks industry that’s causing a major health crisis and plastic emergency.” According to the website, 34 billion plastic bottles enter our oceans and waterways every year! And in the UK, we only recycle a measly 44.2 percent of plastic waste. The company has a partnership with Seven Clean Seas and gives quarterly donations made from its sales to help clear up the plastic pollution in some of the world’s most heavily plastic polluted areas. So, by buying Lo Bros drinks, you’re also doing your bit to help. Available online and also (in glass bottles and cans) from most major supermarkets at around £5 for a pack of four x 250 ml cans.



Moving upmarket now, the **REAL Drinks Co** produces naturally fermented sparkling tea that’s elegantly packaged and a great alternative to a sparkling wine. It has the depth, flavour and complexity of a good wine, but with no alcohol. It’s available in three variants: Peony Blush; Royal Flush and Dry Dragon. In addition to the full sized bottles, there are ready-to-drink cans of Dry Dragon and Royal Flush available too. Royal Flush is available at Sainsbury's for £9 a 75cl bottle, Dry Dragon at Ocado and Waitrose, Peony Blush isn't as easily available, but this and the whole range are available online



## SOME 'EGGSTRAORDINARILY' GOOD EASTER EGGS

It seems as though there are more delicious and unusual Easter eggs on the market this year than ever, (and I'm told that we Brits buy some 80 million of them each year) but I've done some of the hard work for you, and checked out the better ones. And it's interesting to note that three trends have emerged this year: chocolate orange; pistachio and letterbox friendly flat eggs:



Let's start at the lower end of the market, and it seems that chocolate orange is THE flavour combo this year. I was pleased to see that **Tesco** has a strong range (many on offer for Clubcard holders too) including **Cadburys Mini Eggs Orange**, and the **Maltesers Mini Bunnies Orange Chocolate Bag**, starting from just £1.50. Or you could go all out this Easter with showstopping great value new eggs such as the **Galaxy Milk Chocolate Caramel Giant Easter Egg** (£12.00) And there is also a fabulous **Citrine Egg** by Chococo (see later)



If you are looking to buy an egg for a vegan friend or family member, then the range has been expanded considerably in recent years. But don't forget that most dark chocolate eggs are vegan. For milk chocolate fans, **Ombar Oat M'lk** range is vegan chocolate with sustainability at its core. This smooth and creamy all-round 'good egg' is made with the Oat M'lk Chocolate OG, which has less carbon emissions and 40% less sugar than 'regular' milk chocolate. It uses organic and gluten-free British-grown oats. Plus, for every Ombar Oat M'lk Egg sold, 5p goes towards reforestation projects in Ecuador where they sustainably source their precious cacao. Available from Selfridges, Planet Organic, Amazon, Ombar.com and the best independent health food shops nationwide. RRP: £9.99



Another trend this year is the 'postbox' egg - by necessity it's flat! It's a great idea and there are a number of companies producing them. If you want a vegan one, then **HAPPI** is a good choice. HAPPI's deliciously thick, Easter egg-shaped bars are available in three flavours that are sure to please any chocolate fan; Plain Milk, Salted Honeycomb and White Raspberry. HAPPI's Easter Bars (RRP £6.49, 140g bars) and HAPPI's Easter Eggs (RRP £10.70, 170g) are available from Waitrose and Amazon. To buy online and find out more, please visit [happichoc.com](http://happichoc.com)



**Fairtrade** brands and retailers have launched their own fair firsts this Easter. Co-op, Divine, Tony's Chocolonely and Waitrose are all releasing cracking additions to their

Fairtrade egg selections while supporting farmers in low-income countries. Right now, non-Fairtrade farmers only earn around six percent of each £2 chocolate bar. Climate change, unpredictable weather, new pests, and crop diseases make it harder for farmers to grow the cocoa, but when we choose to Fairtrade eggs we help support hundreds of thousands of cocoa farmers and their families to improve their livelihoods and tackle the impacts of climate change. Ticking the Fairtraid and postbox-friendly boxes, new for Easter 2024 is **Divine's** range of flat eggs. The Divine flat egg is not only palm oil free but also more environmentally friendly, with over 40% less packaging compared to a boxed egg. It's the ultimate chocolate-lovers letterbox gift! Available in vegan dark chocolate with raspberry, and milk chocolate, caramel and crunch. £5 rrp from: Waterstones, Ocado, Oxfam, Divine Webshop, Amazon, independent stores.





Another Fairtrade star is **The Cracking Pistachio Egg from Waitrose**. Inside a shell of Waitrose & Partners No. 1 blonde chocolate hides an indulgent pistachio flavoured egg speckled with pistachio nibs. This new treat looks like a pistachio with the chocolate coating perfectly imitating the shell. **Available from:** John Lewis, Waitrose rrp £14. Fairtrade changes the way trade works through better prices, decent working conditions, and a fairer deal for farmers and workers in low-income countries. Fairtrade International is an independent non-profit organisation representing 2 million small-scale farmers and workers worldwide. It owns the FAIRTRADE Mark, a registered trademark of Fairtrade that appears on more than 30,000 products.

Pistachio is another popular flavour this year, with **Venchi**, the local chocolate shop in Richmond, offering a **Chocoviar Pistachio Chocolate Egg**, with toffee crunch, nibs, and pistachios. It looks amazing, as do all their eggs, including a **75% Chocoviar Egg** that also has crunchy cacao nibs. They aren't cheap, at just over £50 for a 350g egg, but oh my, they do look very special indeed! If you want to go the 'whole hog' do visit the shop as they have a wonderful selection of spectacular eggs.



A brilliant British multi award-winning chocolate company is **Chococo**, based in Dorset. The company produces a delicious range of hand crafted, sustainably sourced, chocolate Easter eggs and gifts. Celebrating its 20th birthday, it still cares as much about great taste, sustainability, provenance and its environmental impact, as it did at the start. The Easter range is presented in plastic-free, recyclable packaging. Chococo is now sourcing sustainable chocolate made with fino de aroma cocoa beans from Luker Chocolate in Columbia. The new



signature 47% milk chocolate made exclusively for Chococo has a wonderfully deep, yet creamy, chocolate taste but contains just 30% added sugar. The Half & Half egg to share ((£45/500g) is 47% Colombia milk and vegan friendly 72% Ecuador dark. Half is mlk and the other dark with a selection of delicious chocolates hidden inside. There is also the orange flavoured Citrine Egg £20 for 250g filled with chocolate orange gems. Beautifully decorated with a dusting of shimmer, they're fabulous. [Chococo.co.uk](http://Chococo.co.uk)

Another rather special chocolate company is Pierre Marcolini, the Belgian chocolatier with a few shops in London and an online presence. This year, the company is promoting its praline eggs in six flavours. The shells are made from chocolate, carefully coloured and filled with retro flavours such as sablé breton (shortbread cookie), brownie biscuit or speculoos, pistachio, pecan nuts and soft almond paste. A box of 12 eggs is £23 or £39 for 30.



Regular readers will know I'm a fan of licorice and **LAKRIDS BY BÜLOW**. The unique chocolate coated licorice 'EGGS' this year are in Crunchy Toffee and Crispy Caramel flavours. There's also a fabulous selection box with an assortment of flavours. The limited edition range is available from £25 to order online and in-store at John Lewis, Selfridges, Fenwick, [lakridsbybulow.co.uk](http://lakridsbybulow.co.uk), and at the new LAKRIDS BY BÜLOW stores in Canary Wharf and Monmouth Street



And if a conventional chocolate egg doesn't appeal and you fancy giving something a little more sophisticated, you could always give a bottle of this wonderful chocolate cream liqueur.

**The Egg Royale** is a chocolate egg like no other. An indulgent and rich chocolate alcoholic cream liqueur made from fine cocoa and vanilla and blended with real cream packaged inside a beautiful glass egg. It's been developed by **Gravity Drinks** – the team behind the cult favourite Christmas Globe Gin Liqueur and Sixpence Pud Gin Liqueur - Egg Royale has become another seasonal favourite. The glass egg can be found sitting in an art-deco style box and it's delicious served straight over ice, in a cocktail or even to add a boozy kick to your Easter dessert - or just pour over vanilla ice cream for an easy treat. 17 per cent ABV £29 for a 70cl bottle from Harvey Nichols and Amazon.



# Three Legs and No Tail!

## A Small Boy in Wonderland - Part 2

by Michael Jay



Last week I told how I had survived the stormy voyage to the Isle of Man only to be incredibly seasick after we landed!

But, never mind, we had arrived and settled into our digs together with many of the cast. One act was a dog troupe of which the star was 'Paris', a lovely giant poodle who could do incredible acrobatics but whose favourite trick was to wait patiently every morning for a slice of my breakfast toast!

The big show was at the Palace, a wonderful Edwardian theatre with beautiful gardens and a vast, elegant ballroom. Every afternoon we walked from our digs at Derby Square, down the hill, past the Villa Marina where Ivy Benson's All Girl Band played, then along the seafront to the theatre, sometimes taking the horse-drawn tram.

Then the magical evening would begin. I remember the air of excitement when I looked through the pass door beside the stage and could see the audience filing in. Sometimes I would venture onto the stage, slightly open the tabs (curtains), and peer out to see hundreds of expectant faces looking up at me! The atmosphere was electric.

One big attraction was the Dagenham Girl Pipers. And no show would be complete without Currie's Waterfalls, a twinkling spectacle of mountainous cascades and illuminated pools on stage over which I used to clamber during rehearsals. One day I slipped and fell in!

One amazing scene had all the dancers in black costumes under UV lamps which made them look like luminous skeletons dancing in the dark. One of my favourite stunts was to balance on top of the huge one-metre diameter silver balls on which the dancers would gyrate. I soon learnt to travel all across the stage on these giant balls which was quite exciting because the slightest loss of control could mean rolling down the stage and head first into the orchestra pit!

Showtime was spent backstage where the stagehands let me help them adjust the lighting, do the sound effects, and pull the great ropes which opened the mighty tabs and raised and lowered the scenery. For many of them this was a side job as they had regular jobs during the day such as working in the sawmills. They were all skilful craftsmen who taught me how to work with wood. I could go anywhere in the theatre, including all the dressing rooms, from the orchestra pit right up to the flies, a frightening place in the roof where I could peer down from the narrow catwalk to the stage thousands of feet below! I even had lessons from the famous bagpiper Jackie Farr and from the trapeze artistes who taught me how to swing right across the stage upside down. The highlight of that was flying high on a wire like Peter Pan. It was heaven!

Many of the acts were the great entertainers of the day all of whom were extremely nice to me and my autograph book is full of their quips and photographs. Similar pictures of all the old pros now adorn the walls of Brinsworth House in Twickenham, the lovely retirement home for variety artistes which I occasionally visit. Of course, at that time there was almost no television so the live theatres were the mainstay of entertainment. It truly was alive!

Almost every evening after the show, we and the cast would meet in the café beside the theatre to come down to earth and chat about how the show had gone. It always went well because I always saw the audience coming out all smiles!

The Palace Theatre had beautiful gardens where I would fly the model aircraft which I built never imagining that I would later be flying Super VC-10s and Boeing 747s for BOAC and British Airways in the skies above.

Attached to the Palace Theatre was its extremely elegant ballroom. The resident dance band was Ronnie Aldrich and the Squadronaires all of whom were superb ex-Royal Air Force musicians. I spent many happy hours sitting beside them listening to their wonderful music. They played in the ballroom every night except Sundays when they played concerts in the Palace Theatre.

The other part of my musical education was to go under the stage, a dark, spooky place and very noisy when the dancers were performing above but it was the way into the orchestra pit where I could sit and listen. It gave me a taste for jazz and dance music which continues to this day as, inspired by Acker Bilk's wonderful tune 'Stranger on the Shore', I started learning the clarinet at my next school, St Marylebone Grammar School. Although founded as The Philological School in 1792, it had lots of musical activities. I was very fortunate because my clarinet teacher was a lovely lady who was the lead clarinettist of the London Symphony Orchestra and taught me well. Of course, she played classical music but, as soon as I heard Benny Goodman and Artie Shaw, I realised what I really wanted. I still play jazz on my clarinet almost every day.

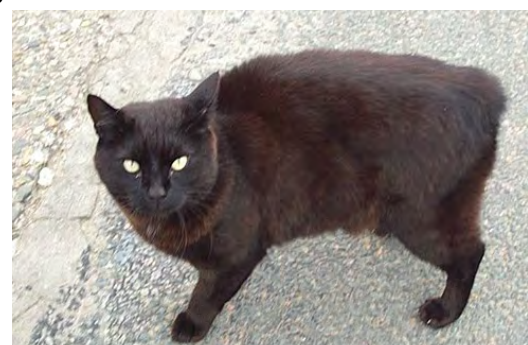
I love the theatre but never had any thoughts of going into the business myself although I have been on stage and television many times since then but in a completely different role.

The Palace Ballroom was also the venue for the prize-giving for the TT races. The riders were great celebrities and often came to the theatre so we got to mix not only with stars of stage and screen but also the heroes of the motorcycle world, such as Geoff Duke, who were all extremely nice to me. We watched the races from various parts of the course and were amazed even then by the incredible speeds at which they whizzed past. Of course, the TT is a dangerous race and I remember one rider failing to take a bend and going head-on into a massive pile of straw bales, causing a fantastic explosion of straw and bits of bike. Incredibly, he got up and walked away but many others have not been so lucky.

There was also a smaller theatre at Onchan on the cliff top near Douglas where the resident hypnotist got the audience to do weird and wonderful things. I still don't understand how he did it but it was absolutely hilarious. Unfortunately, one year, after the show, a member of the audience left still partly hypnotised and walked over the cliff edge to a sad fate. I have no idea what happened to the show but it was big news in the theatre.

So my memories of the Isle of Man are absolutely wonderful. It was, and probably still is, a delightful place although the Palace Theatre was later demolished and replaced by a dull-looking hotel. What a loss! It was a spectacular theatre and ballroom in a lovely seaside setting.

My last visit to the Isle of Man was near the end of my pilot training when I flew a Twin Comanche from the College of Air Training at Kidlington, Oxford to Ronaldsway airport. That, too, was an adventure as we had to wear lifejackets in case we came down in the Irish Sea but it was so nice to see the island again, this time from the air.



Although the Palace Theatre won't be there, I'd love another trip to the Isle of Man which, I am sure, is still the magical place it was when I was a child.

# Save Our Restaurant

From Petersham Nurseries Restaurant

Save Petersham Nurseries Restaurant, Richmond and stand with us in our campaign so that we can continue to provide our unique dining experience in the evening.



Our Supper Clubs at Petersham Nurseries provide enchanting and intimate occasions to dine by candlelight in the magical setting of our greenhouses. Held throughout the year for well over a decade, our dinner events have always been in great demand and are referred to as an ethereal and unique experience.

Since 2006, we have been working with officers of Richmond Council trying to vary our current opening hours in order to offer dinner services to our customers on a more frequent and regular basis.

Unfortunately, 18 years later, we remain no closer to this goal. Our negotiations have been an unusual, protracted, and expensive process. We have now received an Enforcement Notice to cease our evening operation and are currently in the process of appealing against this. We need your continued help and assistance to show that support for Petersham Nurseries far outweighs any objections.

In 2022, we were granted a licence to serve alcohol in the evening, but our ambition remains focused on obtaining planning permission to serve food and drink beyond 5pm. This shows Petersham Nurseries causes no harm to the local neighbourhood.

Petersham Nurseries makes a significant positive contribution to Richmond's visitor economy, raising its status as an important tourist destination and cultural attraction that is unique to London. This contribution includes significant sustainable economic benefits for the local economy including local spend, job creation and wider spin-off benefits for local businesses.

Please stand with us in our campaign to align our planning consents with our alcohol licence so that we can continue to provide our unique dining experience in the evening.

To read our full petition, [please click here](#).



# RICHMOND



## Join the conversation

Come and find out, and influence, how the Metropolitan Police Service is changing to deliver more trust, less crime and high standards for Londoners.

We'd love you to join officers in a conversation to explore what our new plan, A New Met for London, created following feedback from 10,000 community members, partners, and Met people, will mean for improved policing for your local communities.

The theme of this event is anti-social behaviour (ASB).

Come and share your views and help shape the reforms being made and the service to your community.



Tuesday 19<sup>th</sup> March 2024



Arrival between 1800-1830hrs



The Wetlands Centre, Queen Elizabeth Walk, Barnes, SW13 9WT



Book tickets through the Eventbrite QR code above.



**MORE  
TRUST**

**LESS  
CRIME**

**HIGH  
STANDARDS**

# Could real love ever come from something artificial?

By Deep Patel

~ Through the eyes of a Twickenham shop keeper ~

Through being a shop keeper in Twickenham I experience much more than just selling packets of crisps and wine... one of the perks of being a shop keeper is that you get to see many things that others don't...one such activity that I witness people engaging in on a



daily basis in my shop (if not hourly) is the art of arguing...and it's usually couples doing it, and it's usually about their relationships...we've all been there...not one person reading this right now can say that they have never had an argument with a partner (and if they can say that then I would recommend that they either go and see a therapist or encourage them to go and have an argument with their partner right now as otherwise they are not normal!). So realistically, we have all been there...but why do we do it? How do they start?

I know with me personally, I don't argue...I just explain why I am right with a passionate and sometimes loud sounding tone that's all. Not everyone is me, and I see many arguments between couples of all ages breaking out in my shop...what is a shop keeper to do? Well, I usually choose to focus on neutral topics of conversation as arguing couples approach my counter and use the good old lines (complementing their choice of purchase) saying "oh yes, that Hot and Spicy Pot Noodle is my favourite flavour too!" or "oh it's so very cold today isn't it?" (the latter statement has encouraged customers to answer back to me, mainly men, saying "not as cold as my wife's heart mate")...so whatever way you look at it, arguments are happening on a daily basis between couples of all ages, from high-school sweet hearts to members of Twickenham Pensioners Zumba club...they happen and it's always uncomfortable for me to watch as a shop keeper...but what could be the answer to lessening the occurrence of these arguments? Free relationship counselling for all of us provided by the NHS? Perhaps not, they seem to have their work cut out as it is...so what else could help this situation? Could a robot or some kind of artificial intelligence help? While most of us cannot afford to hire our own personal relationship counsellors, most of us seem to be able to afford "Alexa" to help with other areas of our lives...imagine something similar could help with relationship issues...how amazing would that be (or would it?).

Whilst pondering on this very topic one weekday evening, I learnt that one of my own customers has actually produced a full on local theatre production geared around this very



subject area! I felt as though the universe had answered my question through her production somehow...her production is based on a brand new, state of the art, relationship therapy device named "Agape" (pronounced aga-pay) that sits in our homes (like Alexa devices do) but with the aim of solving the pettiest of arguments and grappling the most complex of human issues. Upon hearing this, initially I found myself thinking how on earth could a device with artificial intelligence (programmed by humans themselves) help humans understand themselves better? Then I started to get lost in the absolute convenience and ease of the concept and how useful it could be, an affordable way of saving couples from divorce even? Just think, every time you had an argument with your partner, instead of not talking to each other for days, you could simply "ask Agape" what the solution could be...I mean how amazing would that be?! I found myself thinking "sign me up, I am in!" I was even seeing visions of me selling these devices in my shop and being thanked by customers for saving their marriages in the future...It was just then that I considered the flip-side of this argument...it's a bloomin' machine...made by us...for us...what could it possibly teach us about us that we ourselves don't already know considering we as humans created it?! It could even make things worse maybe? So I found myself totally torn over this very concept and I told the young lady who is a customer of mine and has produced a local theatre production as a dark comedy exploring this very concept of a device that through artificial intelligence aims to solve all our relationship problems...after I told her how much I both liked and didn't like the idea of a "robot" telling me what is right or wrong with my human relationships she encouraged me to watch the show and see for myself it's deeper message...if nothing more, she told me it would have me crying with laughter...so I am going to go and see it! It's fairly local, I am a local shop keeper and I love supporting local projects too! So if anyone is interested in joining me, check out the production named "Artificially Yours" at the Riverside Studios between the 9th and the 21st of April to see this dark comedy of a "cautionary tale to a society that already relies heavily on technology" (<https://riversidestudios.co.uk/see-and-do/artificially-yours-107222/>)...If you are over 60 years of age, a student, registered disabled or an NHS worker you get £10 discount off your ticket too, and registered carers go free with a purchased ticket! I might even see you there, and if I don't see you there, once you've seen it, pop into my shop and let's compare notes...I will look forwards to talking about this with you and maybe we can then answer the question together "can real love ever come from something artificial?"...I am not so sure...

**Remember...**

***"Nothing is real...unless we first believe it to be..."***

### **MY CREATURE-KINDNESS TIP OF THE WEEK...**

ANT SEASON IS UPON US...STOP ANTS KINLY WITHOUT HARMING THEM FOR GOOD KARMA: Sprinkle pure essential peppermint oil, Olbas oil, fine black pepper or white vinegar around places where you don't want them to come (but NOT directly on them)...they will go without you having to harm them. This tip works for almost all insects! White vinegar left in bowls around places you don't want mice, foxes, rats and squirrels also stops them kindly, alternately use humane live capture traps and release rodent in wooded areas far from your home.

For ANY specific tip to stop any "pest" or insect KINDLY (for good karma/blessings), email me: [InsectLoversUnite@gmail.com](mailto:InsectLoversUnite@gmail.com) or join my Facebook page: "INSECT LOVERS UNITE".



# HAMPTON CHORAL SOCIETY

## Rossini's Petite Messe Solennelle

**Musical Director - Richard Harker  
with professional soloists**

**Saturday 23 March 2024 - 7.30pm**

**St James's Church, St James's Road,  
Hampton Hill, TW12 1DQ**

**Tickets: £15 (Adults), £7 (Under 16's)  
Box Office: 020 8941 5394**

**On the door: contactless, card, cheque, cash  
[www.hamptonchoral.org.uk](http://www.hamptonchoral.org.uk)**

Charity Number 261788



## Pop Music

by Anna Jordan

Teddington Theatre Club at the Hampton Hill Theatre until 16<sup>th</sup> March

It's only rock 'n roll, but it provides a rich soundtrack to life-stories in *Pop Music*, a stimulating evening of toe-tapping music and emotionally charged entertainment with intelligence, wit and poignant dramatic content. Set against a pop music background, it is essentially a dialogue between two guests at a wedding reception in Barnsley. The startling black and white chequerboard floor in Danny Danger's disco provides a canvas for this fast-moving and energetic show which explores the past lives of the two protagonists.

Movement is key, with both actors dancing with style and skill, and maintaining high energy levels throughout. The play evokes the power of songs to trigger memories and provide dreams of love and happiness or, alternatively, give solace in misery and despair. Through their shared love of dance and pop, Kayla, and her dance partner, simply known as G, embark on a discovery of themselves.



Natasha Nicola's lithe and supple Kayla is a whirlwind of energy, coquettish yet knowing, with a purposefulness which takes total command of her safe territory, the disco floor. Clad in a soft pink trouser suit, she captures the frustrations of the wannabe singer, and tells with conviction the story of her developing maturity from early "cheap perfume" sexual awakenings, through to the mediocrity of marriage in later life. Especially powerful are her poignant monologues, ruefully reflecting on the evils of chin hair and bad manicures.

Josh Clarke plays the suited and booted G with an immaculately observed and nuanced performance, contrasting with the ebullient Kayla. His story is of hopeful possibilities, but, because "life is like a pop song," seems doomed to failure. Beautifully delivered monologues include a magnificently funny rap and his intense memory of his mother's terminal cancer.

Ian Kinane's direction is sharp and pacey. The stage is alive as dancefloor dialogue is captured in clever imagery and contemporary references. With its constant flow of movement, the skill of choreographer Gita Singham-Willis shines through, creating varied dance styles, convincing, spontaneous, and dynamic.

*Pop Music*, a joyful and uplifting production, full of memorable movement and music, and witty dialogue, is a gem of a show. "Is life like a pop song?" Go see!

Read Steve Mackrell's review at [www.markaspen.com/2024/03/13/pop-music](http://www.markaspen.com/2024/03/13/pop-music)

Photography by Dave Shortland



## The Kite Runner

by Khaled Hosseini, adapted by Matthew Spangler

Nottingham Playhouse and Liverpool Everyman, at Richmond Theatre until 27<sup>th</sup> March, then on tour until 6<sup>th</sup> July

*The Kite Runner* is a book filled with guilt, remorse, unspeakable cruelty, friendship and loyalty all interwoven in the history of the upheavals Afghanistan has gone through. It is poignant and personal in so many ways and this adaptation masterfully manages to encompass this, staying as true to the novel as a drama can.

The story is told through the narration of Amir, now an adult living in America, who unveils his cowardice and guilt from the terrible events of his childhood. For many a production this autobiographical approach would lead to a clunky performance, but not this one. Vincent effortlessly flows between the adult and the twelve-year-old version of Amir in a realistic and remarkable way. Vincent understands the character, with whom it would be hard to sympathise, if it was not for the humanising portrayal he gives.



Amir's staunch and seemingly insensitive father BaBa (Dean Rehman) and the sociopathic bully Assef (Bhavin Bhatt) whose clear chemistry with the other actors highlights how this is not a fairy-tale where good is always good and bad is evil, but a deep insight into the complexities of being human.

The heart strings are pulled by the sweetest and bravest character, Amir's servant and friend Hassan, whose unquestioning loyalty and joyful innocence moves everyone. Yazdan Qafouri perfectly portrays the childish innocence of Hassan and later Hassan's son Sohrab, but also manages the emotional weight of the terrors both his characters go through. A liking for Amir's character is also gained through his electrifying chemistry with Daphne Kouma as Soraya, from that awkward first introduction at the market, through to the difficulties they face as a married couple.

The kite competition creates realistic kite fights, which keep everyone on the edge of their seats, but without using a single kite, amazing in their imagination and visual impact.

Although a tragedy filled story, through Giles Croft's dynamic direction, events glide into one another at a particularly palatable rate with a level of superlative simplicity. But just remember to bring your tissues!



Read Viola Selby's review at [www.markaspen.com/2024/03/14/kite-run-24](http://www.markaspen.com/2024/03/14/kite-run-24)

Photography by Barry Rivett

# PRIVATE LIVES by Noel Coward

“an impudent little comedy” at the Mary Wallace Theatre

March 16<sup>th</sup> - 23<sup>rd</sup>

When Private Lives opened at the newly-built Phoenix Theatre in 1930, critics varied in their appraisals. After all, despite being billed as a light comedy, it dealt flippantly with divorce, death, co-habitation and domestic violence. While most applauded it as “brittle and sophisticated with the needle-sharp wit we have learned to expect from the author” or as “devastatingly soigne”, others thought it “deeply immoral and unpleasant”, trumpeting “you’ve gone too far this time, Mr Coward!”.



Any suggestion of moral or sexual impropriety inevitably brought audiences flocking to Charing Cross Road to revel in the star performances of Gertrude Lawrence and Noel, and the play ran for six months, crammed to capacity, before transferring to New York. It has seldom been out of the professional and amateur repertoire ever since and ranks, with Wilde and Shaw, among the best English comedies ever written. One of the most perceptive contemporary reviews (the New Statesman) included the words - “It is not the least of



Mr Coward’s achievements that he has disguised the grimness of his play and the fact that his conception of love is really desolating.”

A chance to see Amanda and Elyot love, hate, squabble and fight each other **from March 16<sup>th</sup> - 23<sup>rd</sup>** at the Mary Wallace Theatre.

Booking at [www.richmondshakespeare.org.uk](http://www.richmondshakespeare.org.uk)

The theatre is situated on Twickenham’s Embankment, between St Mary’s Church and the Barmy Arms.



# Otakar Kraus Music Trust to take part in Big Give Arts Impact campaign

Local Richmond charity, The Otakar Kraus Music Trust, is taking part in the Big Give Arts Impact campaign from Tuesday 19 to Tuesday 26 March 2024, with the aim to raise £20,000.

The funds will be used for Otakar Kraus Music School. The charity teaches 76 children and young people with disabilities to play a musical instrument or sing and to perform in public concerts.

Students flourish, making friends, gaining confidence, and developing life skills, such as improved communication and socialisation, with some also taking and passing music exams. The charity helps them become part of the local community and realise their potential.

OK Musical School was set up in 2012 to make music learning truly inclusive and provide the children and young people with musical teaching, tailored to their needs. The students are not typically able to access mainstream musical activities. The lessons are delivered by qualified music therapists, specialising in a wide range of teaching approaches.

Demand to join the OK Music School is constant – there is a current waiting list of 20 children and young people.

Help more young people with disabilities thrive through music by donating.

Donations to OK Music School will be generously matched by Big Give's Champions during the campaign, meaning each donation will be doubled. Find out more about [OK Music School](#).

Valerie Roy, Fundraising Manager at The Otakar Kraus Music Trust said:

“This year we're looking to raise a total of £20,000. In order to access all of the £10,000 we have in the matching pot, we need to raise £10,000 in online donations. We hope everyone will give generously this year to help us reach our target and enable us to carry on the work we all feel so passionately about!”

You can [make a donation online](#) from midday on Tuesday 19 March 2024. The campaign will close on Tuesday 26 March 2024 at midday.

The Big Give is a registered charity (1136547) that runs match funded campaigns for charities and special causes at key moments across the year.



# Richmond upon Thames College Hosts Six Nations Rugby Events with Allianz

Richmond upon Thames College (RuTC) recently partnered with financial services company, Allianz, to host two separate events at the college when England played at Twickenham during the Six Nations 2024 tournament. These events took place in RuTC's wonderful college restaurant, 'The View', which is situated on the 4th floor overlooking Twickenham Stadium along with far-reaching views across the whole of London.

Level 2 and 3 Catering and Hospitality students, led by RuTC's brilliant teaching staff, prepared, cooked and served a delicious three-course meal for Allianz representatives and over 100 guests.

Front of House lead, Daniele Giraud, commented, "It was amazing to see our students do so well in such a high-profile professional event."



The events were a huge success, bringing together a mix of rugby fans to create a real buzz around the exciting games with high profile guest speakers sharing their insights and anecdotes to entertain guests. For the England v Wales match on 10th February, speakers included former England rugby union player, Lewis Moody MBE and former Welsh rugby union player, Shane Williams MBE. On Saturday 9th March for the England v Ireland game, the guest speakers were Mark Cueto MBE, former English international rugby union player and Stephen Ferris, former Irish rugby union player.



Jade McDonald, from the Corporate Events team at Allianz praised RuTC staff and students for their hard work at these events:

*"It was a pleasure working with RuTC. Thank you for all your patience and help behind the scenes and for making the organisation of our events with you so memorable for us and our guests. The food was amazing, and the waiting staff led by Daniele were incredible."*



**Richmond upon  
Thames College**

# St Mary's University

## St Mary's University Student Awarded Sports Journalists' Association Academy Award

Sports Journalism master's student at St Mary's University, Twickenham, Laura Howard, has been awarded the Sports Journalists' Association (SJA) Academy Award for 2024.

[Sports Journalism](#) master's student at St Mary's University, Twickenham, Laura Howard, has been awarded the [Sports Journalists' Association](#) (SJA) Academy Award for 2024.

attend the award ceremony at the Park Plaza, Westminster Bridge on Monday 25th March.

Alongside Laura, fellow St Mary's student and women's football writer and reporter Adriana Wehrens received Highly Commended in the same category.

Speaking on this achievement, Sports Journalism Course Lead at St Mary's Dr Daragh

Minogue said, "Everyone on the Sports Journalism master's programme is proud of Laura. She is already a role model for so many other students on the course."

Kathryn Anastasi, deputy head of talkSPORT and SJA Committee member, said "We are very excited to welcome Laura, winner of the SJA Academy Award, to talkSPORT for a placement.



The judges at SJA were impressed with Laura's entry which featured strong storytelling and argued for more role models in disability sport and women's sport.

The SJA Academy Award in association with [talkSPORT](#) provides an opportunity for those with less than one year of experience in sports journalism, or those who have never worked in the industry full-time, to be recognised at the industry awards.

Laura has been offered a placement at talkSPORT, as well as received an invitation to

"Her entry shone through with a real focus on underrepresented communities in sport and we can't wait to see her career in sports journalism flourish."

You can find out more about the Sports Journalism master's course at St Mary's University at <https://www.stmarys.ac.uk/courses/postgraduate/sports-journalism>



St Mary's  
University  
Twickenham  
London



# Ten things you might not know about cherry trees

The different varieties of cherry trees around the Royal Parks are some of the most popular sights in London each spring.

These were added to in autumn 2019 when 25 new cherry trees were planted in the Royal Parks, a gift from Japan as part of the Japan-UK Season of Culture 2019-20. With spring 2024 set to feature some amazing displays of colour, here are ten facts you might not know about the spectacular trees.



*A parakeet in a cherry tree*

## 1. Not all cherry trees bear fruit

In fact many ornamental varieties have been bred to produce more flowers and, in some cases, don't produce fruit at all. Most of the flowering cherry trees we see in UK parks and streets are valued for their flowers, with the cherries they produce small and bitter – not great for people but a good snack for the birds.

## 2. You can eat the blossom

That's right, the cherry blossoms (and leaves) of varieties we find in the UK are edible. In Japan they're pickled and used as ingredients for sweets, baking and tea. Come springtime you'll also find sakura-flavoured chocolate bars. Don't eat cherry pips though, they're toxic and can be dangerous in large amounts - and please don't pick the blossom from the trees in the Royal Parks!

## 3. Cherry trees are found around the world

There are flowering cherry trees in countries across the globe, including America, Korea, Brazil and India, with many originating through links with Japan. The UK's cherry tree population rose in the last few years as another 6,500 new trees were planted across the UK as part of the Japan-UK Season of Culture 2019-20, gifts from Japan to celebrate the relationship between the two countries.

#### **4. Not all cherry blossom is pink**

While pink is the colour most people associate with cherry blossom, it tends to change from dark pink, to light pink, to white when fully in bloom. Some varieties even begin as a greenish yellow colour before changing to white and then to pink.

#### **5. Blossoms are here one day, gone the next**

Cherry trees generally tend to bloom for only a week or two each spring. This could be even shorter if seasonal wind or rain knocks the blossoms from the trees. In the Royal Parks the parakeets and other birds are fond of the blossom as a tasty treat. It's one of the things that makes the cherry blossom so special – catch it while you can because it won't be around for long.

#### **6. Cherry trees don't live long**

Across all varieties cherry trees tend to have a short lifespan, typically around 15-30 years. However black cherry trees can live for anything up to 250 years. The oldest known cherry tree is the famous Jindai Zakura in Japan – still flowering every spring an estimated 2,000 years since it was planted.

#### **7. An Englishman saved one of Japan's favourite cherry trees**

Collingwood "Cherry" Ingram was an expert gardener with a passion for flowering cherry trees. While on a trip to Japan in 1926 he was shown a painting of a beautiful cherry tree with white blossom, believed to have died out in Japan. Ingram recalled having taken cuttings from a tree of the same species in a garden in Sussex and managed to reintroduce the Great White Cherry, or Taihaku, to Japan. Five Great White Cherry trees will be planted in The Regent's Park for the Japan-UK Season of Culture 2019-20.

#### **8. The cherry blossom capital of the world is not in Japan**

It's in a town called Macon in the state of Georgia, America. In 1952 a local resident discovered one Yoshino cherry tree and loved it so much that he learned to propagate the trees and gifted them to his community. Macon now has over 350,000 Yoshino cherry trees flowering at their annual blossom festival.

#### **9. Cherry blossoms bring people together each spring**

In the Royal Parks in London, cherry trees are up there with ducklings and daffodils as the most Insta-worthy spring scenes around. In Japan this seasonal wave of pink and white that sweeps from the south to the north of the country is arguably the highlight of the year. People gather under the blossoms to share food and drink for hanami, a centuries-old flower viewing tradition. It's something that has also become popular in some of London's parks in recent years.

#### **10. They symbolise more than just a new season**

In Japan many schools and businesses have a cherry tree in front of their building. The financial year and the school year both start in April, with the blooming trees a symbol of renewal and a fresh start. In public parks people gather under the branches, eating and drinking, appreciating the fleeting beauty of life with friends and family. The short-lived hanami celebrations are a reminder to seize the day.



# Red Roses Guinness Women's Six Nations Squad

Red Roses head coach John Mitchell has named a 35-player squad for the upcoming Guinness Women's Six Nations Championship 2024. Marlie Packer continues as England captain. The Saracens skipper will reach the outstanding accolade of 100 caps when she next takes to the field for her country.

There are first Six Nations call-ups for uncapped Exeter Chiefs duo Maddie Feaunati and Lizzie Hanlon, Vicky Laflin of Trailfinders Women as well as Sophie Bridger (Saracens). The latter's club teammate Sydney Gregson returns to the international fold after earning three caps in 2015.

Zoe Harrison (Saracens), Emily Scarratt (Loughborough Lightning) and Abbie Ward (Bristol Bears) feature in a Red Roses tournament squad for the first time since the 2022 Rugby World Cup final. The squad of 35 has a combined total of 1,109 caps and contains 19 forwards and 16 backs.

*"The Six Nations is an awesome tournament and we have named squad where competition for a place in the matchday 23 exists in every position," Mitchell said. "The girls are showing signs of building good habits when they come into camp and bring with them a great attitude and fantastic energy, which follows on from the commitment they show to their club week on week. The Red Roses have excelled in this tournament for a long time. There is a hunger to stay the best, but we must earn the right to win Test matches. We are focused on improving performance and putting teams under more pressure to create a variety of scoring opportunities. There is a great excitement around the group, and we are relishing the challenge of the next seven weeks."*

The Red Roses open their campaign with a trip to Parma to take on Italy before hosting Wales at Ashton Gate, Bristol, on Saturday 30 March (kick-off 16.45 GMT).

Edinburgh's Hive Stadium will be the venue for England's visit to Scotland ahead of a return to London to face Ireland at Twickenham Stadium on Saturday 20 April (kick-off 14.15 BST).

The final game of the Championship sees the Red Roses take on last year's runners-up France on Saturday 27 April (kick-off 16.45 BST) at Stade Chaban-Delmas, Bordeaux.

## Forwards

Zoe Aldcroft (Gloucester-Hartpury, 48 caps)  
Lark Atkin-Davies (Bristol Bears, 54 caps)  
Sarah Beckett (Gloucester-Hartpury, 34 caps)  
Hannah Botterman (Bristol Bears, 42 caps)  
Mackenzie Carson (Gloucester-Hartpury, 10 caps)  
Poppy Cleall (Saracens, 65 caps)  
Kelsey Clifford (Saracens, 3 caps)  
Amy Cokayne (Leicester Tigers, 72 caps)  
Maddie Feaunati (Exeter Chiefs, uncapped)

Rosie Galligan (Saracens, 14 caps)  
Lizzie Hanlon (Exeter Chiefs, uncapped)  
Sadia Kabeya (Loughborough Lightning, 13 caps)  
Alex Matthews (Gloucester-Hartpury, 62 caps)  
Maud Muir (Gloucester-Hartpury, 25 caps)  
Cath O'Donnell (Loughborough Lightning, 30 caps)  
Marlie Packer (Saracens, 99 caps)  
Connie Powell (Harlequins, 14 caps)  
Morwenna Talling (Sale Sharks, 11 caps)  
Abbie Ward (Bristol Bears, 61 caps)

## Backs

Holly Aitchison (Bristol Bears, 25 caps)  
Sophie Bridger (Saracens, 2 caps)  
Jess Breach (Saracens, 33 caps)  
Abby Dow (Trailfinders Women, 40 caps)  
Sydney Gregson (Saracens, 3 caps)  
Zoe Harrison (Saracens, 46 caps)  
Tatyana Heard (Gloucester-Hartpury, 18 caps)  
Natasha Hunt (Gloucester-Hartpury, 67 caps)

Megan Jones (Leicester Tigers, 16 caps)  
Ellie Kildunne (Harlequins, 38 caps)  
Vicky Laflin (Trailfinders Women, uncapped)  
Lucy Packer (Harlequins, 16 caps)  
Helena Rowland (Loughborough Lightning, 28 caps)  
Emily Scarratt (Loughborough Lightning, 108 caps)  
Emma Sing (Gloucester-Hartpury, 6 caps)  
Ella Wyrwas (Saracens, 6 caps)

Unavailable for the Guinness Women's Six Nations due to injury:

Sarah Bern (Bristol Bears, 61 caps)  
Claudia MacDonald (Exeter Chiefs, 32 caps)  
Nancy McGillivray (Exeter Chiefs, uncapped)

Katie Buchanan is currently injured but could return during the Six Nations window.

Maisy Allen, Delaney Burns, Lilli Ives Campion and Liz Crake will come into camp as cover for the week.



# Match Preview: Burnley v Brentford

**Analysis, team news, match officials and more. Here's everything you need to know ahead of Brentford's Premier League game against Burnley on Saturday (3pm kick-off GMT)**

Written by Brentford Football Club

Brentford's Premier League campaign continues with an away game against Burnley on Saturday (3pm kick-off GMT).

The Bees suffered a narrow 2-1 defeat to table-toppers Arsenal last time out, while Vincent Kompany's side drew 2-2 with West Ham United at London Stadium.

## Pre-match Analysis

Richard Cole, Playmaker Stats: Brentford must be wary of a Burnley side happy to shoot from distance

Brentford travel to Burnley this Saturday in a crucial Premier League encounter as the Bees look to stay above the danger zone.

It's been a tough time for Brentford. Since the beginning of February, Thomas Frank's side have faced Manchester City twice as well as Liverpool, Chelsea, and Arsenal in what has been a rough fixture list.

Now it's a vital period for the Bees to get back to winning ways and charge up the table in a far more favourable end-of-season run-in.

Turf Moor is the destination on Saturday and Vincent Kompany's side have the worst home record in the league, having won just one game in front of their own fans and picking up five points there in total – less than the nine they have earned on the road.

While Brentford have gone five league games without a win (despite some good performances), spare a thought for Burnley fans who haven't seen their side win in the Premier League in their last 10 games. Only Everton fans (11 games) are waiting longer for a victory.

The Clarets have had just 292 shots in the Premier League (the second lowest, ahead of only Sheffield United). Perhaps an inability to create many clear-cut chances is why Burnley have the second-highest number of goals from outside of the box (8, only Manchester City have more). That works out at 30 per cent of their total goal tally coming from range, a surprisingly high figure in a sport where long-range goals are becoming rarer.

Funnily enough, two of the five goals Brentford have scored from outside of the box this season came against Burnley in the clash at Gtech Community Stadium. Both Bryan Mbeumo and Saman Ghoddos scored with super strikes after Yoane Wissa had put the Bees up from close range in a 3-0 win.

Burnley went down to 10 in that game back in October when Connor Roberts picked up a second yellow card in the second half. That was one of five sending offs Burnley have had in the 2023/24 campaign, the highest number in the league (alongside Liverpool).



## Head to Head

	Comparisons	
27	Goals	40
62	Goals Conceded	52
138	Corner Kicks	127
46%	Possession	45%
54	Yellow Cards	65
5	Red Cards	1



Going forward, Brentford could find joy in wide areas at the weekend. Burnley have managed to block crosses only 27 times this season (the second fewest behind Arsenal – who may just be stopping those situations earlier), something the likes of Mads Roerslev and Sergio Reguilón could thrive on.

Balls into the box mean that Ivan Toney gets the service he thrives on, although Toney may face a tough aerial duel with Burnley defender Dara O'Shea. The Republic of Ireland international has won 87 aerials this season, the fifth-highest number in the league (Ethan Pinnock is fourth with 92) but will face a striker who will be desperate to get back on the scoresheet after not firing in his last four.

Should everything go right for Brentford on Saturday, perhaps fans can enjoy seeing the team move back up the table in the remaining games of the season.

## **Scout Report**

Recent performances restore optimism at Turf Moor

There is no escaping the fact this season has been a challenging one for Burnley.

After storming their way to the Championship title last season with an exciting and entertaining style of play, there were undoubted hopes the drop to the second tier would be an anomaly and they would soon be back on their way to returning to the fold as an established Premier League side, as they had been for the six campaigns prior.

Their multi-million-pound summer transfer window suggested they would be going for it and, with the early focus on the other promoted sides, Sheffield United and Luton Town, being relegation candidates from the off, Vincent Kompany's men found themselves away from the spotlight, in that respect.

Perhaps it was due to the heavy turnover in the squad – just three players who started the final game of 2022/23 were in the line-up for the first game of 2023/24 – but it has not gone that way.

By the start of December, they had lost 11 of their 13 league games and picked up just four points, which left them rooted to the bottom of the table. When striker Lyle Foster was ruled out for a month after reaching out for help with his mental health, they lost not only a key member of the squad, but their chief creative and goalscoring outlet.

“With what the team is doing in terms of effort and sacrifice every single day before crossing that line, they've been of the highest level,” said Kompany after two late West Ham goals robbed them of a first home win of the season on 25 November. “I just wish they get rewarded with results.”

His wish was granted the following weekend, when Burnley thumped Sheffield United 5-0 to avoid the unwanted status as the only team in English Football League history to lose their first eight home games of a season.

They picked up another four points from the next four games, which moved them to within five points of safety.

The turn of the year did not see a change in fortunes, however, and they have since fallen even further adrift. They are now 10 league games without a win and 10 points behind 17th-placed Nottingham Forest with 10 games left to play.

That could all change if Everton and Forest are handed points deductions for breaching the Premier League's spending rules, but they know they must take care of themselves and their performances first

and foremost before concerning themselves with what-ifs.

But they are not down and out yet - and their recent displays have brought a smidgen of optimism. Most recently, against West Ham last Sunday, they deservedly took a 2-0 lead at London Stadium, courtesy of a stunner from David Datro Fofana and a Konstantinos Mavropanos own goal, before being denied an overdue win by super sub ex-Claret Danny Ings.

Kompany walked into his post-match press conference in east London in a deflated mood: "Maybe if I lean back on this chair, I won't be able to see anyone, just eyebrows," he joked.

Their final run of games after the international break is not particularly forgiving as they still have to face Chelsea, Manchester United, Newcastle and Tottenham – but they also still have to play Everton, Sheffield United and Nottingham Forest, so you can be sure they will not give up until the death.

## **In the Dugout**

Vincent Kompany

Vincent Kompany started his playing career at Anderlecht, in his native Belgium, as a teenager in 2000.

He progressed through the youth ranks at the Constant Vanden Stock Stadium to the first team, where he was part of the side that won the Belgian First Division in 2003/04, under Hugo Broos, and 2005/06, under Ariël Jacobs.

Top European clubs had already shown an interest in the defender during this early part of his career, but it wasn't until the summer of 2006 that he moved on to Hamburg of the Bundesliga for €10 million.

An Achilles injury cut short his first season in Germany, but he managed 37 appearances in all competitions in 2007/08 and added a UEFA Intertoto Cup winner's medal to his growing list of achievements.

In August 2008, Kompany signed for Manchester City, one month before Sheikh Mansour's purchase of the club was completed. As a result, he became an integral part of the revolution at the Etihad Stadium. In the summer of 2011, he was named club captain and he would go on to lift four Premier League titles, four Carabao Cups, two FA Cups and two Community Shields, along with multiple personal accolades.

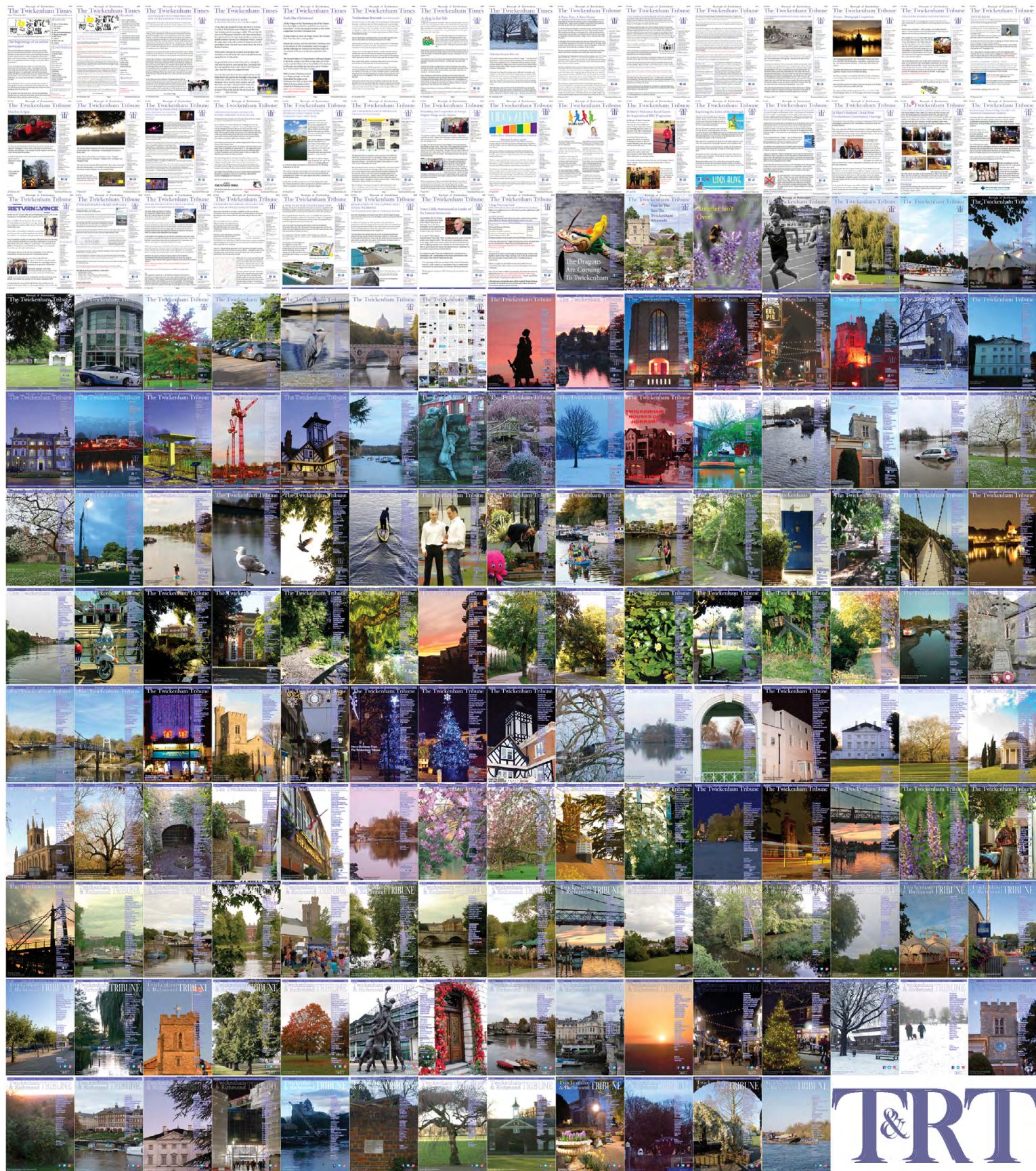
The later years of his time at the club were heavily disrupted by injury and he managed a total of only 59 Premier League appearances from the 2015/16 to the 2018/19 campaign. During the final weeks of the latter, he scored one of the division's great goals, with a thumping drive against Leicester City that teed up City's title win days later.

Later in May 2019, it was announced he would make a fairytale return to Anderlecht as player-manager, but he stepped down to focus on playing after a poor start and then took up the role on a permanent basis the following year after confirming his retirement after 17 years and more than 500 appearances.

He spent two years in the role, before returning to England to take over at Burnley on a long-term deal and is now the youngest manager in the Premier League at 37 – three years Wolves boss Gary O'Neil's junior – and the eighth youngest in the top four divisions of English football.



# 384 editions of the **Twickenham & Richmond Tribune** online - Lots to read: News, Reviews, History, Sports and On-going Sagas in the Borough of Richmond upon Thames



Half Page

Quarter Page  
Landscape

Quarter Page Portrait

Eighth Page

Eighth Page  
Landscape

Example advert sizes shown above

Thousands read The Twickenham & Richmond Tribune

If you are reading this you could be advertising your business with  
The Twickenham & Richmond Tribune. Community rates are  
available

Contact: [advertise@TwickenhamTribune.com](mailto:advertise@TwickenhamTribune.com)

View ad details at [www.TwickenhamTribune.com/advertise](http://www.TwickenhamTribune.com/advertise)

**Contact**

[contact@TwickenhamTribune.com](mailto:contact@TwickenhamTribune.com)  
[letters@TwickenhamTribune.com](mailto:letters@TwickenhamTribune.com)  
[advertise@TwickenhamTribune.com](mailto:advertise@TwickenhamTribune.com)



**Published by:**

Twickenham & Richmond Tribune (in association with World InfoZone Limited)

Registered in England & Wales

Reg No 10549345

The Twickenham Tribune is registered with the ICO under the Data Protection Act, Reg No ZA224725

©Twickenham & Richmond Tribune. All rights reserved. No part of this publication may be used or reproduced without the permission of Twickenham & Richmond Tribune. While we take reasonable efforts, this online newspaper cannot be held responsible for the accuracy or reliability of information. The views and opinions in these pages do not necessarily represent those of The Twickenham & Richmond Tribune.

[Terms & Conditions](#)